

NAUJI UŽDAVINIAI Nr.3/2012

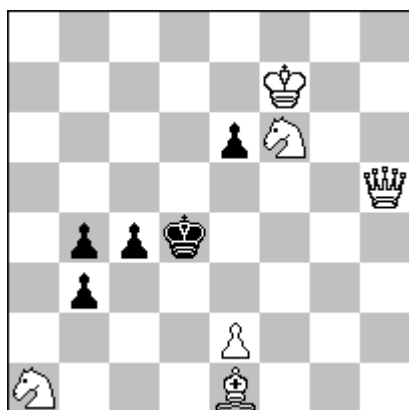
ORIGINALS *** INEDITES *** URDRUCK *** ПУБЛИКУЕТСЯ ВПЕРВЫЕ

Skyrelį tvarko:

Vilimantas SATKUS
Parko g. 2A,
LT-58351 Akademija, Kėdainių rj., Lithuania
vilimantas.satkus@gmail.com

Pamažu gausėja ir etudininčių gretos. Rusas Pavelas Arestovas vienintelis mūsų debiutantas. Добро пожаловать! Sveikas atvykęs! Welcome in „Šachmatija“!

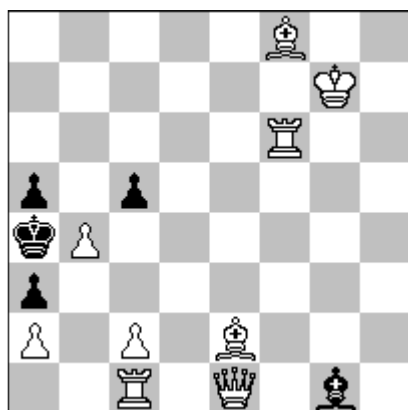
2456 P. PETRAŠINVIČ
Belgradas, Serbija



2 vv

(6 + 5)

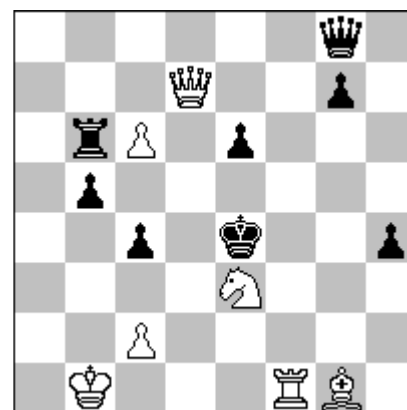
2457 V. ROMANOVSKIS
Ludza, Latvija



2 vvv

(9 + 5)

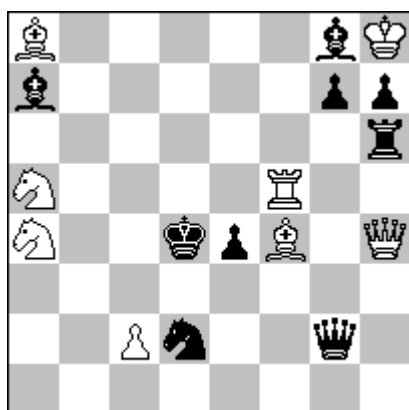
2458 Ž. JANEVSKI
Gevgelija, Makedonija



2* v

(7 + 8)

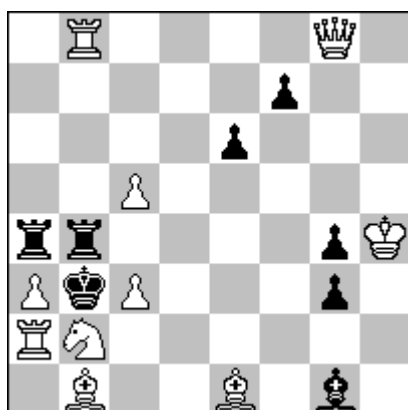
2459 A. POPOVSKI
Skoplè, Makedonija



2* v

(8 + 9)

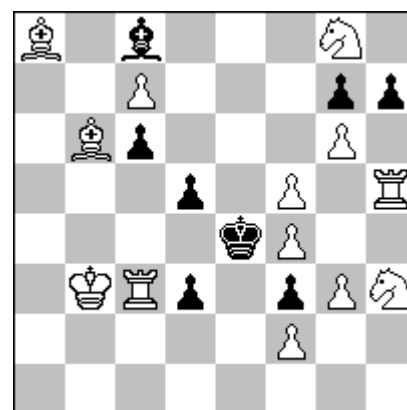
2460 V. ROMANOVSKIS
Ludza, Latvija



2 vv

(10 + 8)

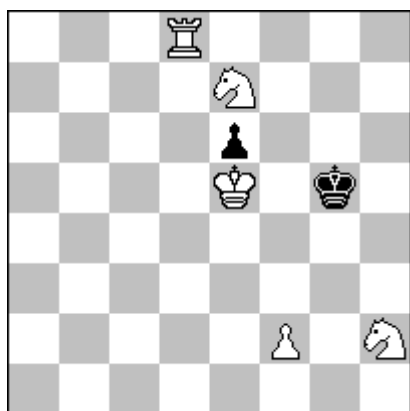
2461 M. RIMKUS
Kriūkai, Šakių rj.



2 vvvv

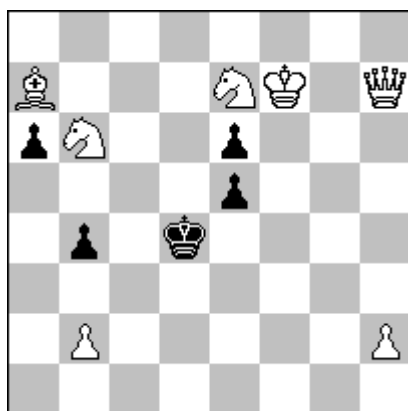
(13 + 8)

2462 V. KOŽAKIN
Magadanas, Rusija



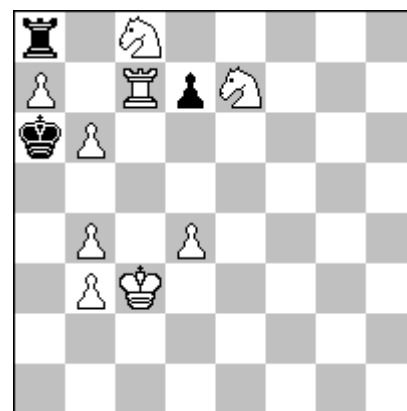
3 vv (5 + 2)

2463 P. PETRAŠINOVIĆ
Belgradas, Serbija



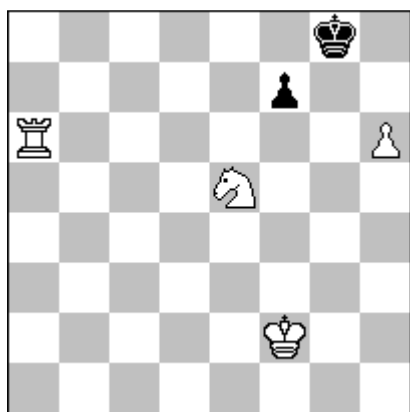
#3 (7 + 5)

2464 L. MAKARONEC
Haifa, Izraelis



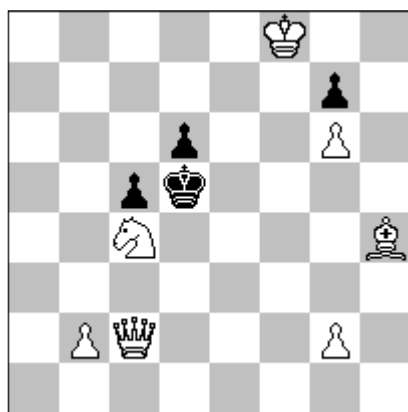
#3* (9 + 3)

2465 N. ZUJEVAS
Klaipėda



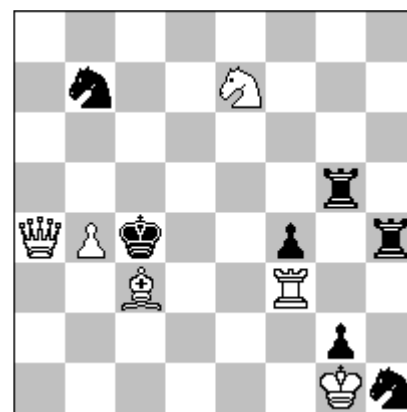
#4 (4 + 2)

2466 P. PETRAŠINOVIĆ
Belgradas, Serbija



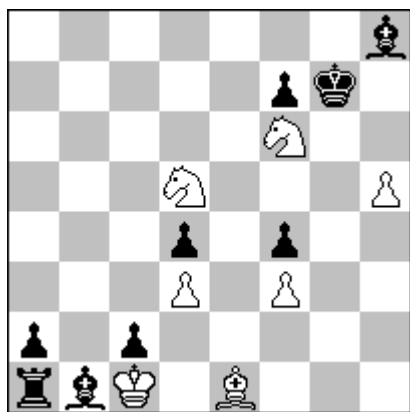
#4 vvv (7 + 4)

2467 L. MAKARONEC
Haifa, Izraelis



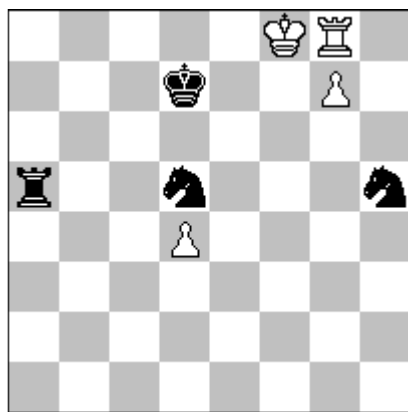
#4 (6 + 7)

2468 O. MIHALČO
Košicë, Slovákija



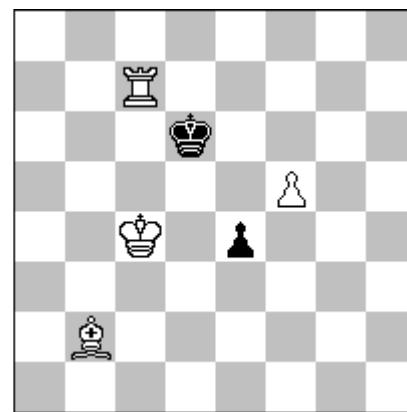
#10 (7 + 9)

2469 P. ARESTOV
Krasnogorskas, Rusija



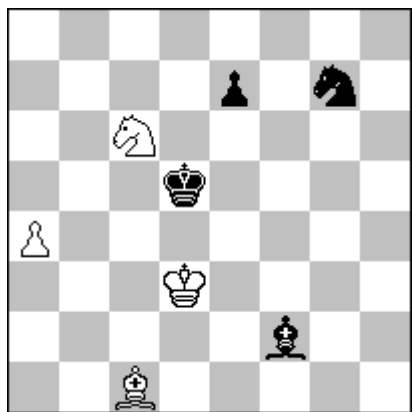
= (4 + 4)

2470 N. ZUJEVAS
Klaipėda



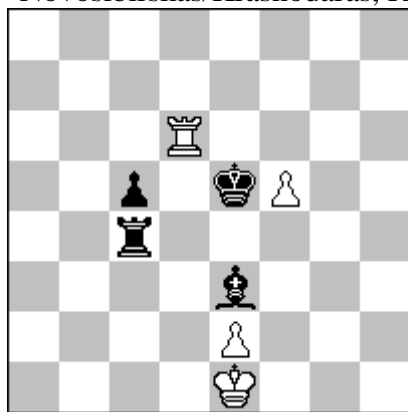
h # 2* (4 + 2)

2471 J. CARF
La Ferté Saint Aubin, Prancūzija



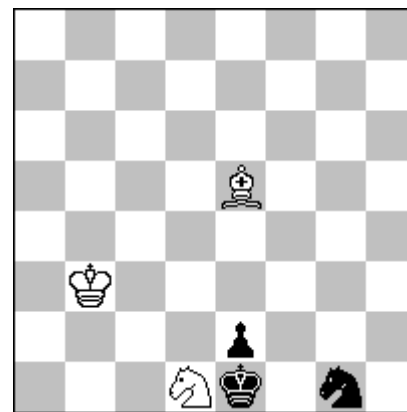
h # 2 2.1.1.1 (4 + 4)

**2472 A. DIKUSAROV,
I. ANTIPIŅ**
Novosibirskas/Krasnodaras, RU



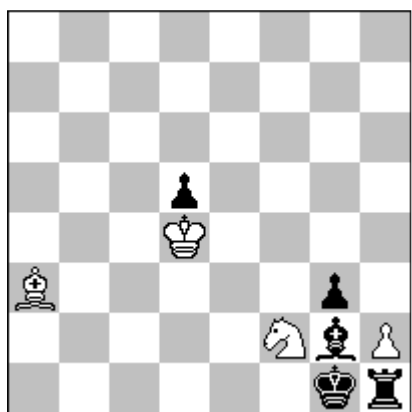
h # 2 2.1.1.1 (4 + 4)

2473 M. KULIGIN
Zaporožē, Ukraina



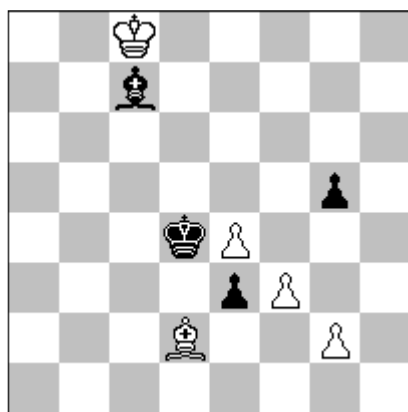
h # 2* 2.1.1.1 (3 + 3)

2474 N. ZUJEVAS
Klaipėda



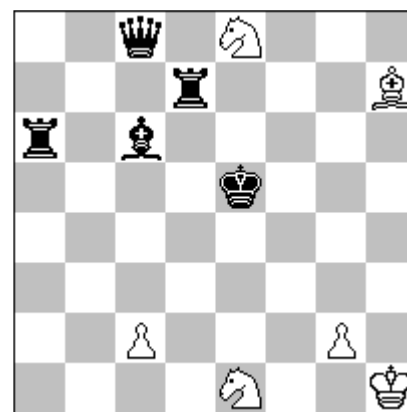
h # 2 b)h2jB (4 + 5)

2475 Pascale PIET
Saint Jean de Braye, Prancūzija



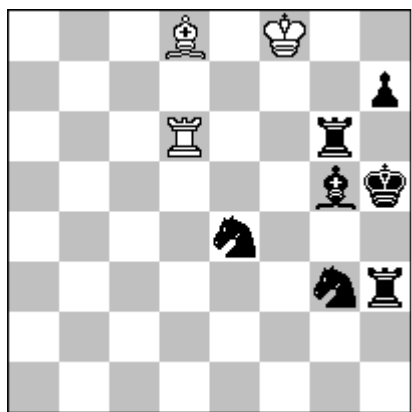
h # 2 2.1.1.1 (5 + 4)

2476 A. ARMENI
Roma, Italija



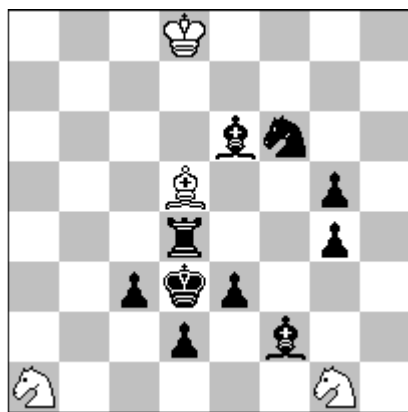
h # 2 2.1.1.1 (6 + 5)

2477 A. ONKOUD
Stenas, Prancūzija



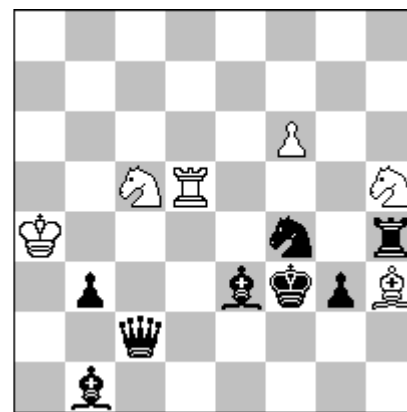
h # 2 2.1.1.1 (3 + 7)

2478 A. ARMENI
Roma, Italija



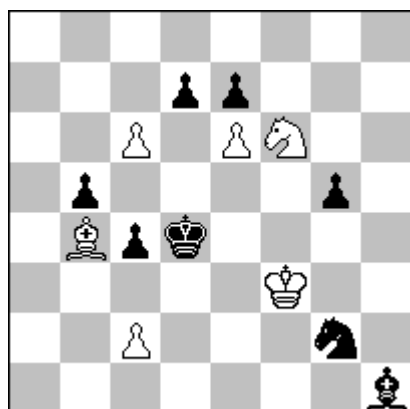
h # 2 4.1.1.1 (4 + 10)

2479 C. JONSSON
Skerholmenas, Švedija



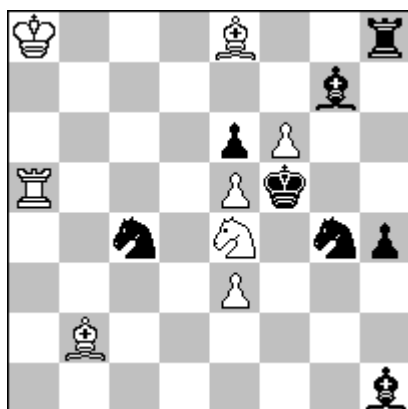
h # 2 2.1.1.1 (6 + 8)

2480 A. ONKOUD
Stenas, Prancūzija



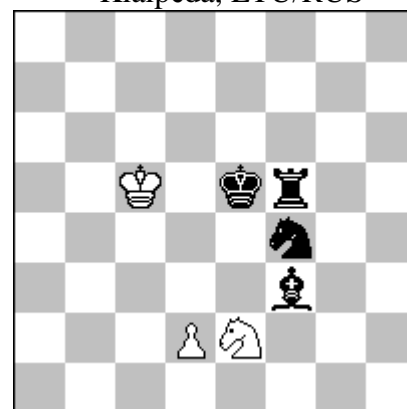
h # 2 2.1.1.1 (6 + 8)
b)Zf6→c7

2481 A. ONKOUD
Stenas, Prancūzija



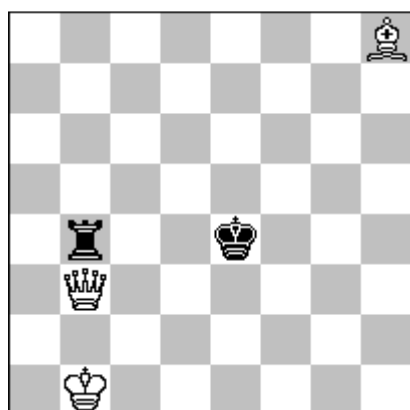
h # 2 b)-e6 (8 + 8)

**2482 N. ZUJEVAS,
V. KOLPAKOV**
Klaipėda, LTU/RUS



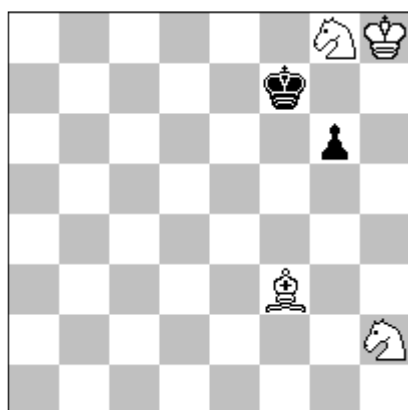
h # 2 b)Rf3→g4 (2 + 4)
c)Ze2→f6

2483 V. PALIULIONIS
Vilnius



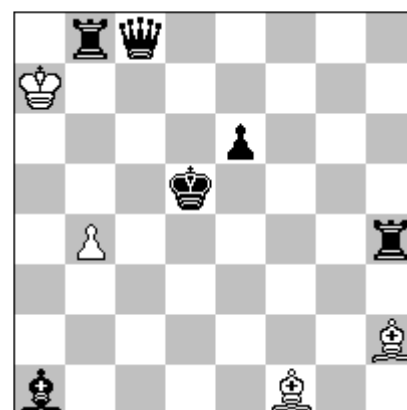
h # 2,5 0.2.1.1.1.1 (3 + 2)

2484 N. ZUJEVAS
Klaipėda



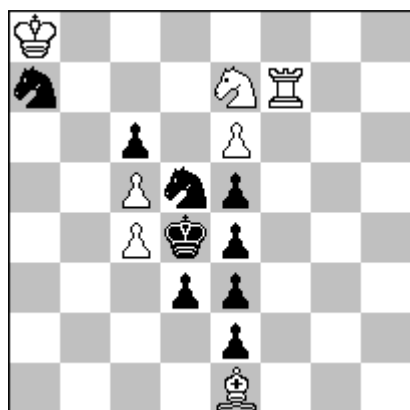
h # 2,5 0.2.1.1.1.1 (4 + 2)

2485 V. BARSUKOV
Sankt Peterburgas, Rusija



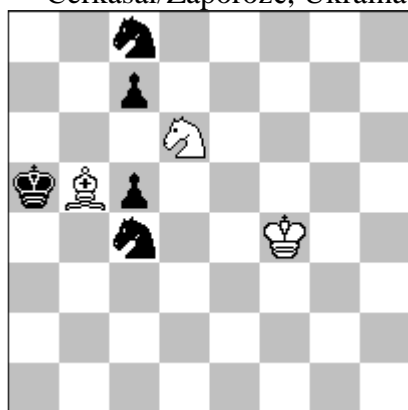
h # 2,5 0.2.1.1.1.1 (4 + 6)

2486 C. JONSSON
Skerholmenas, Švedija



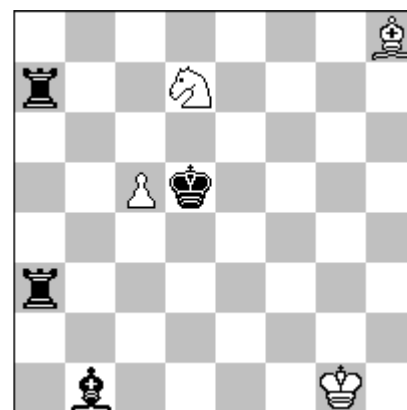
h # 2,5 0.3.1.1.1.1 (7 + 9)

**2487 V. CHUPČENKA,
V. ŠEVČENKA**
Čerkasai/Zaporožė, Ukraina



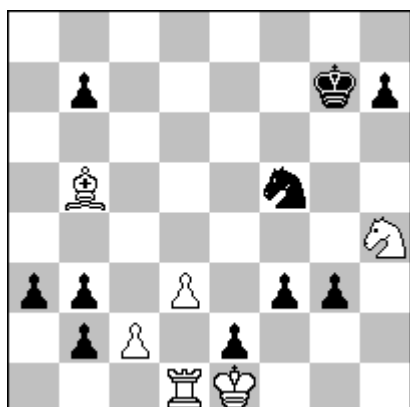
h # 3 2.1.1.1.1.1 (3 + 5)

2488 Pascale PIET
Saint Jean de Braye, Prancūzija



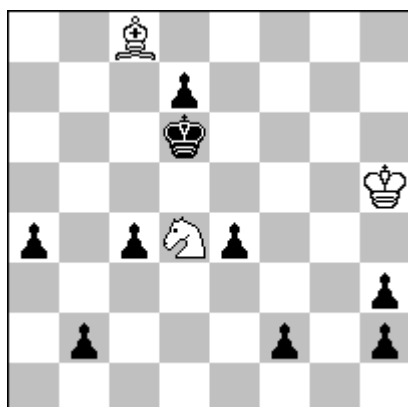
h # 3 2.1.1.1.1.1 (4 + 4)

2489 C. JONSSON
Skerholmenas, Švedija



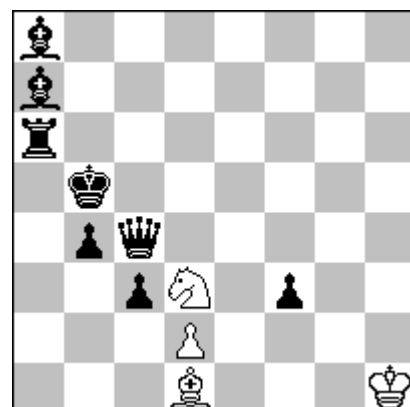
h # 3 3.1.1.1.1.1 (6 + 10)

2490 Pascale PIET
Saint Jean de Braye, Prancūzija



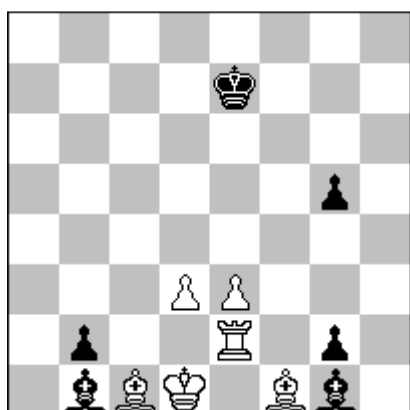
h # 3 2.1.1.1.1.1 (3 + 9)

2491 N. ZUJEVAS
Klaipėda



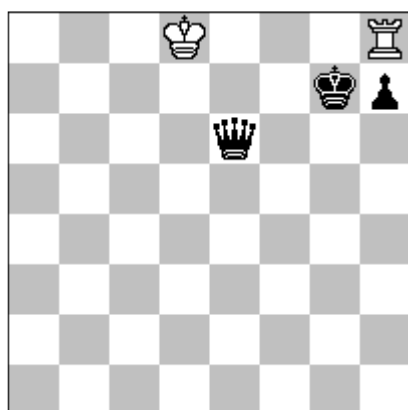
h # 3 2.1.1.1.1.1 (4 + 8)

2492 M. RIMKUS,
Kriūkai, Šakių rj.



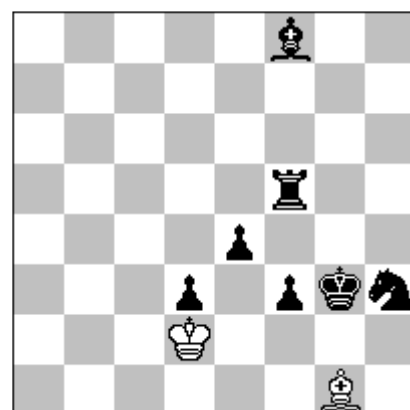
h # 3 b)e2→d2 (6 + 6)

2493 V. PALIULIONIS
Vilnius



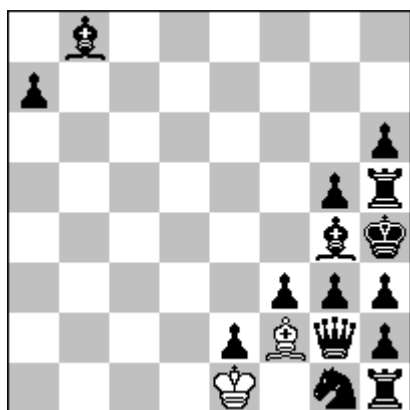
h # 3,5* 0.1.1... (2 + 3)

2494 V. BARSUKOV
Sankt Peterburgas, Rusija



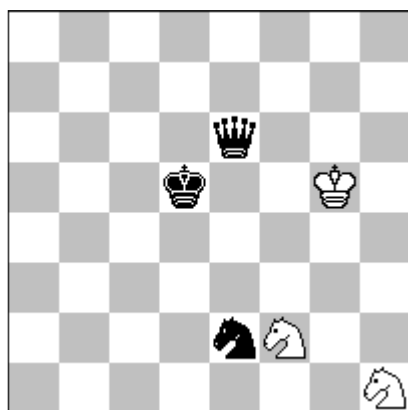
3,5 0.2.1... (2 + 7)

2495 I. KRAMPIS
Ryga, Latvija



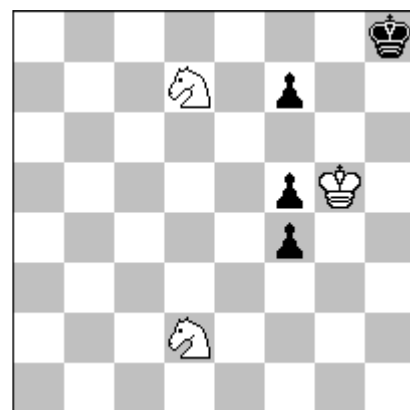
h # 3,5 0.1.1... (2 + 15)

2496 V. PALIULIONIS
Vilnius



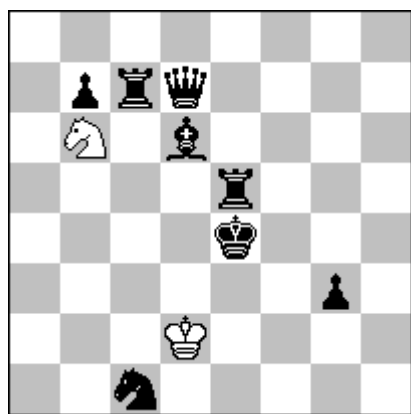
h # 4 2.1.1... (3 + 3)

2497 V. BARSUKOV
Sankt Peterburgas, Rusija



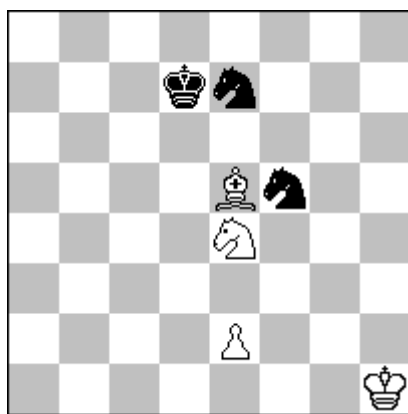
h # 4 b)Zd7→a8 (3 + 4)

2498 V. CHUPČENKA
Čerkasai, Ukraina



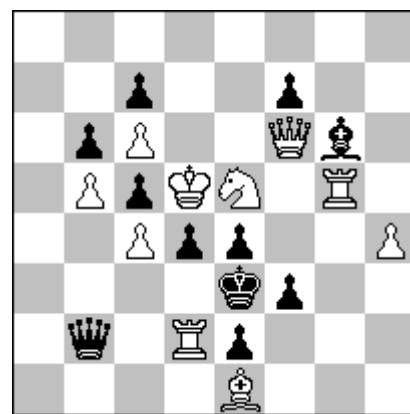
h # 4 2.1.1... (2 + 8)

2499 M. RIMKUS,
Kriūkai, Šakių rj.



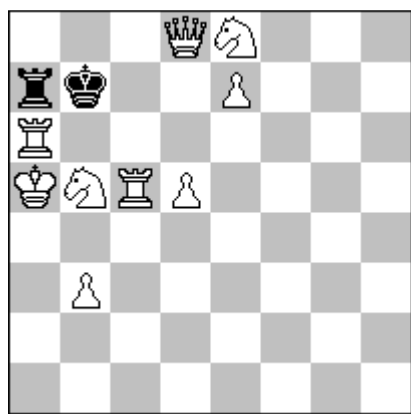
h # 4,5 b)f5→c3 (4 + 3)

2500 L. MAKARONEC
Haifa, Izraelis



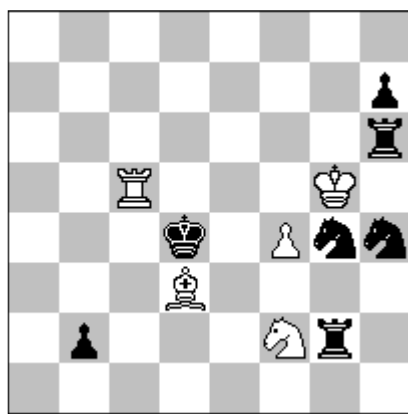
s # 5 (10 + 11)

2501 S. DIETRICH
Hailbronnas, Vokietija



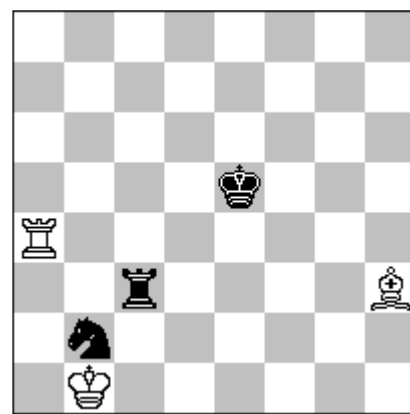
s # 8 (9 + 2)

2502 P. TRITTEN
Ganji, Prancūzija



h # 2 2.1.1.1 (5 + 7)
Take&Make (Kerti&Eini)

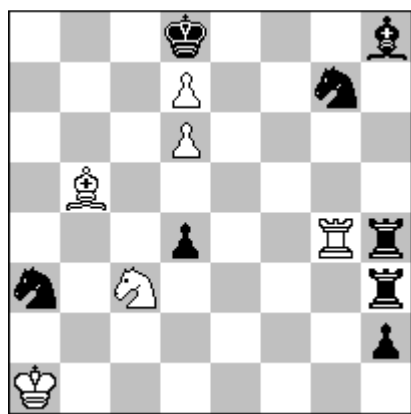
2503 M. RIMKUS,
Kriūkai, Šakių rj.



h # 2 b) h3→e3 (3 + 3)

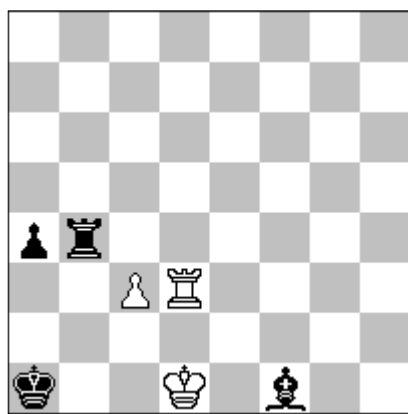
Kerti&Eini, Vaiduokliai (Ghost)

2504 D. MÜLLER
Oelsnicas, Vokietija



hs # 3 2.1.1.1.1.1 (6 + 8)

2505 N. ZUJEVAS
Klaipėda



hs # 3,5 0.2.1... (3 + 4)

**Gerbiami skaitytojai,
sprendimus, komentarus,
pastabas ir pasiūlymus iki
2012 12 31 siųskite
Mečislovui Rimkui**

**Pušyno g. 2-2,
LT-71215 Kriūkai,
Šakių rj.,
LITHUANIA**

*Dear chessfriends,
Please send your solutions and
comments by 31 December 2012
to Mečislovas RIMKUS*